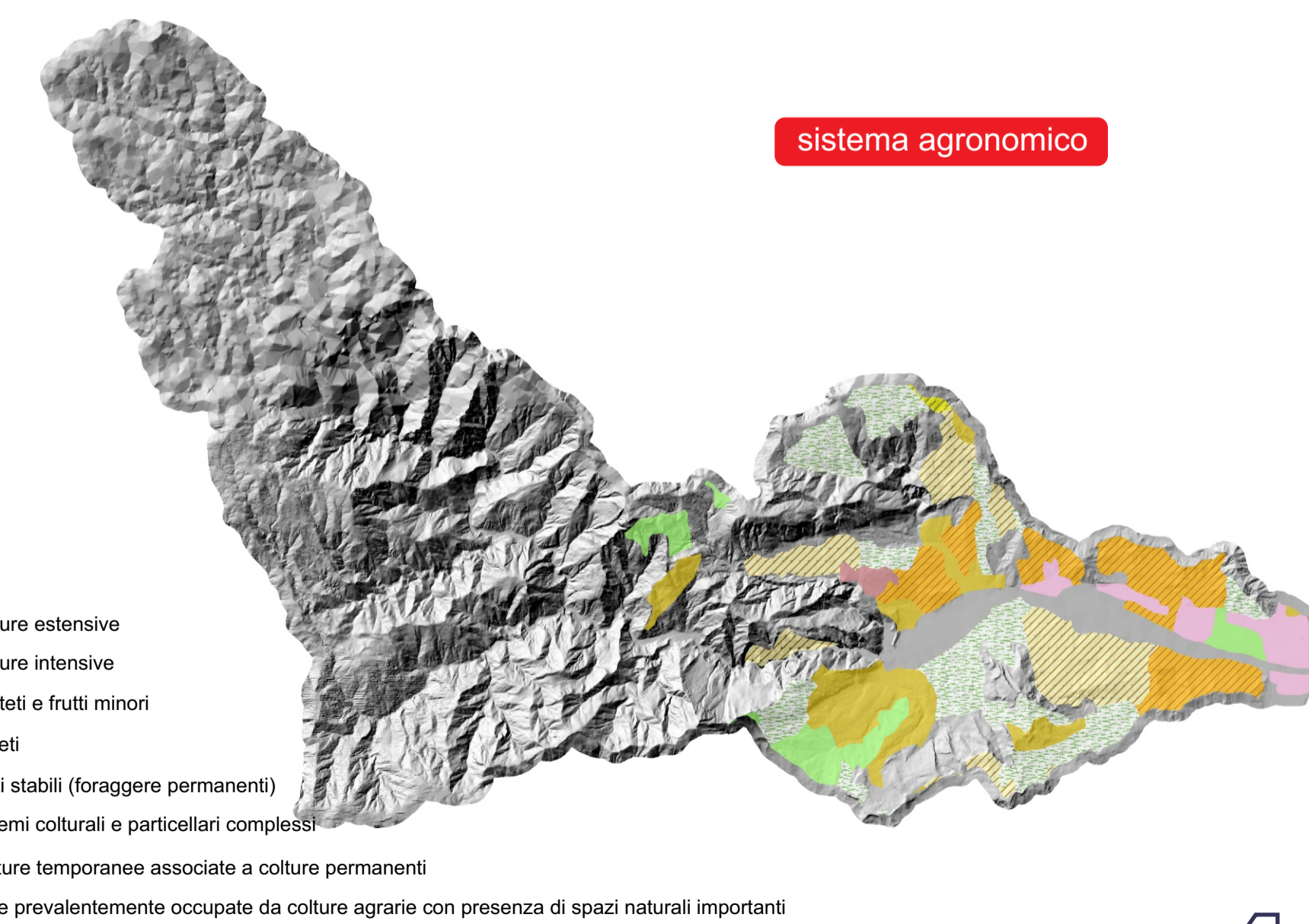
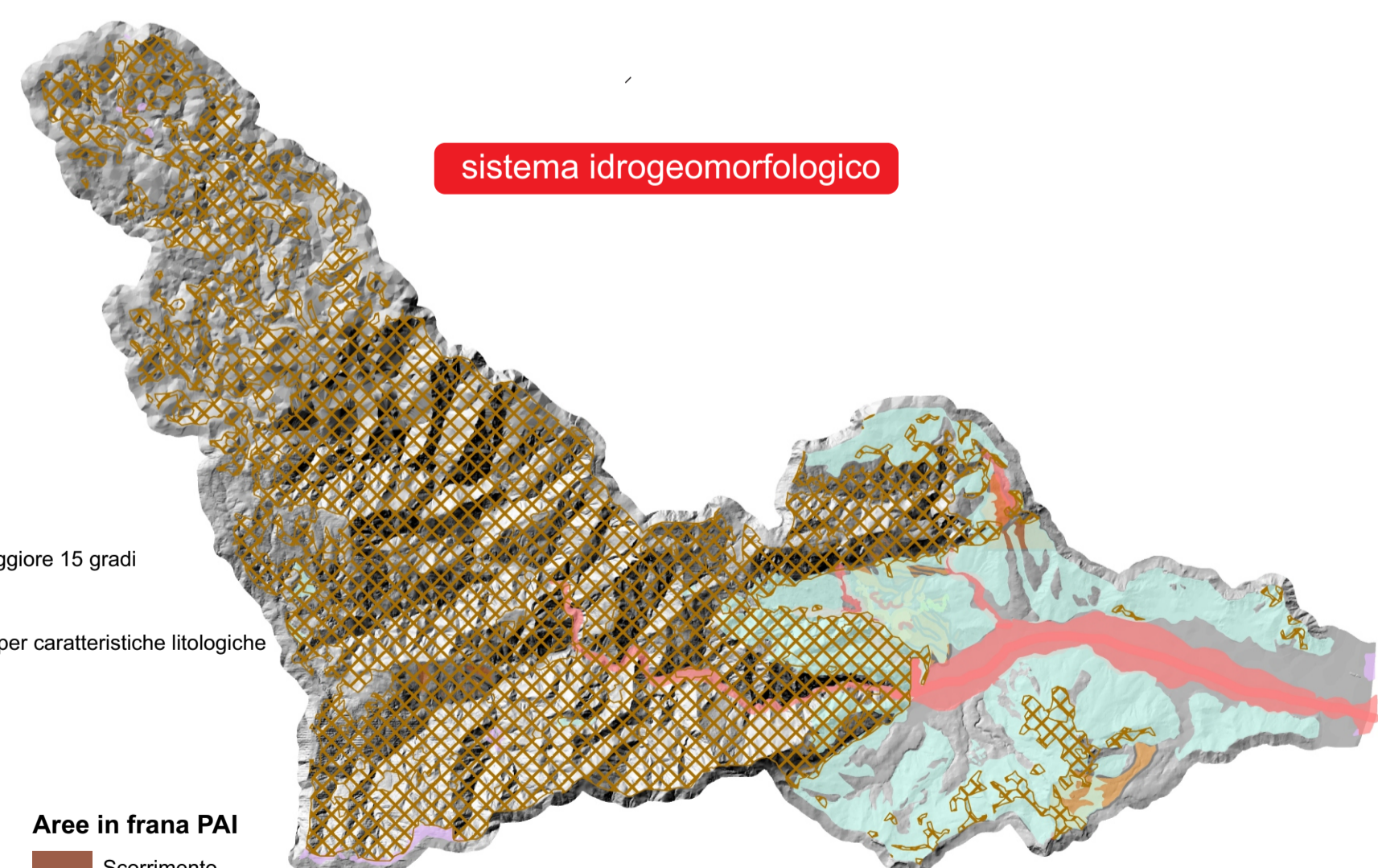
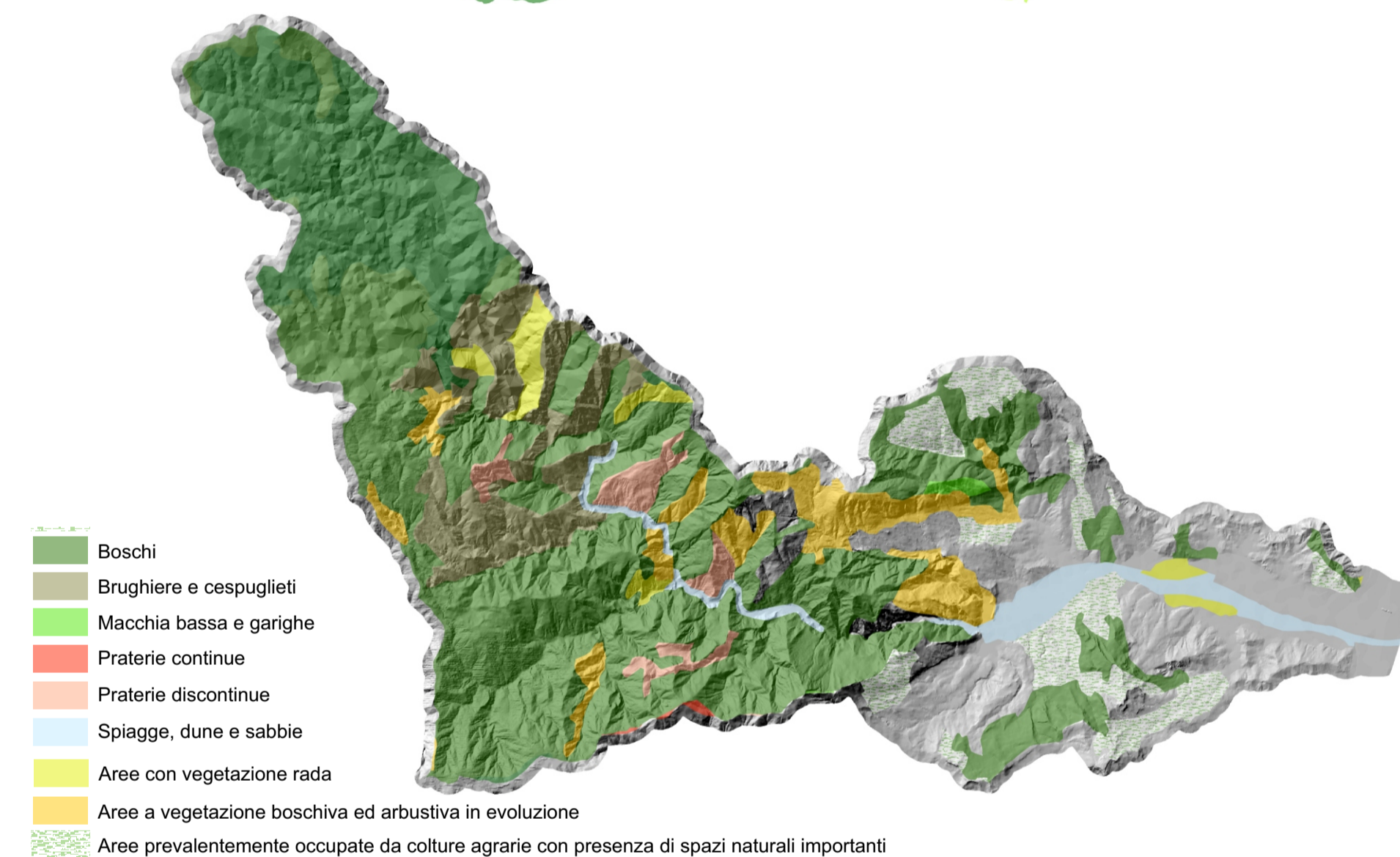
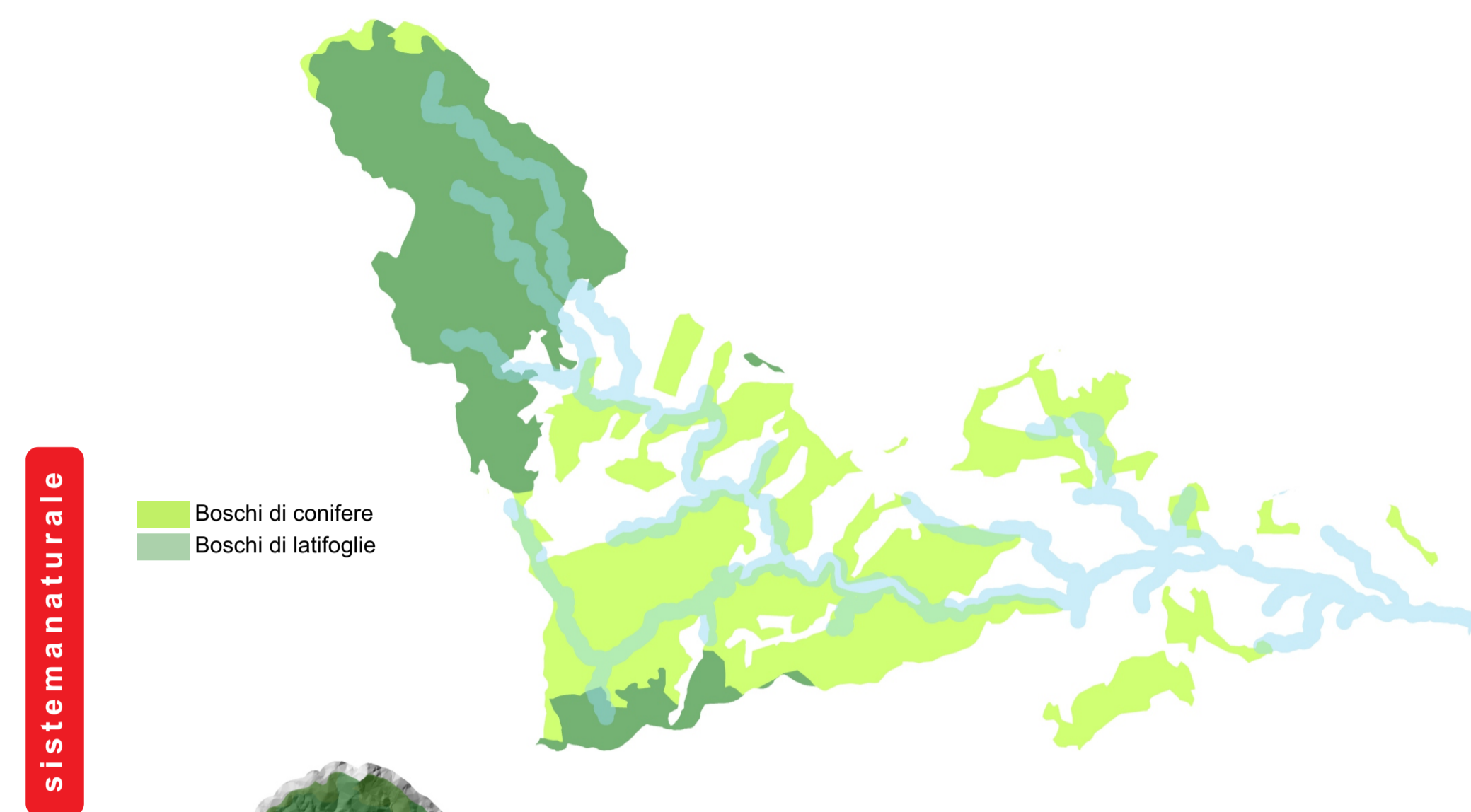
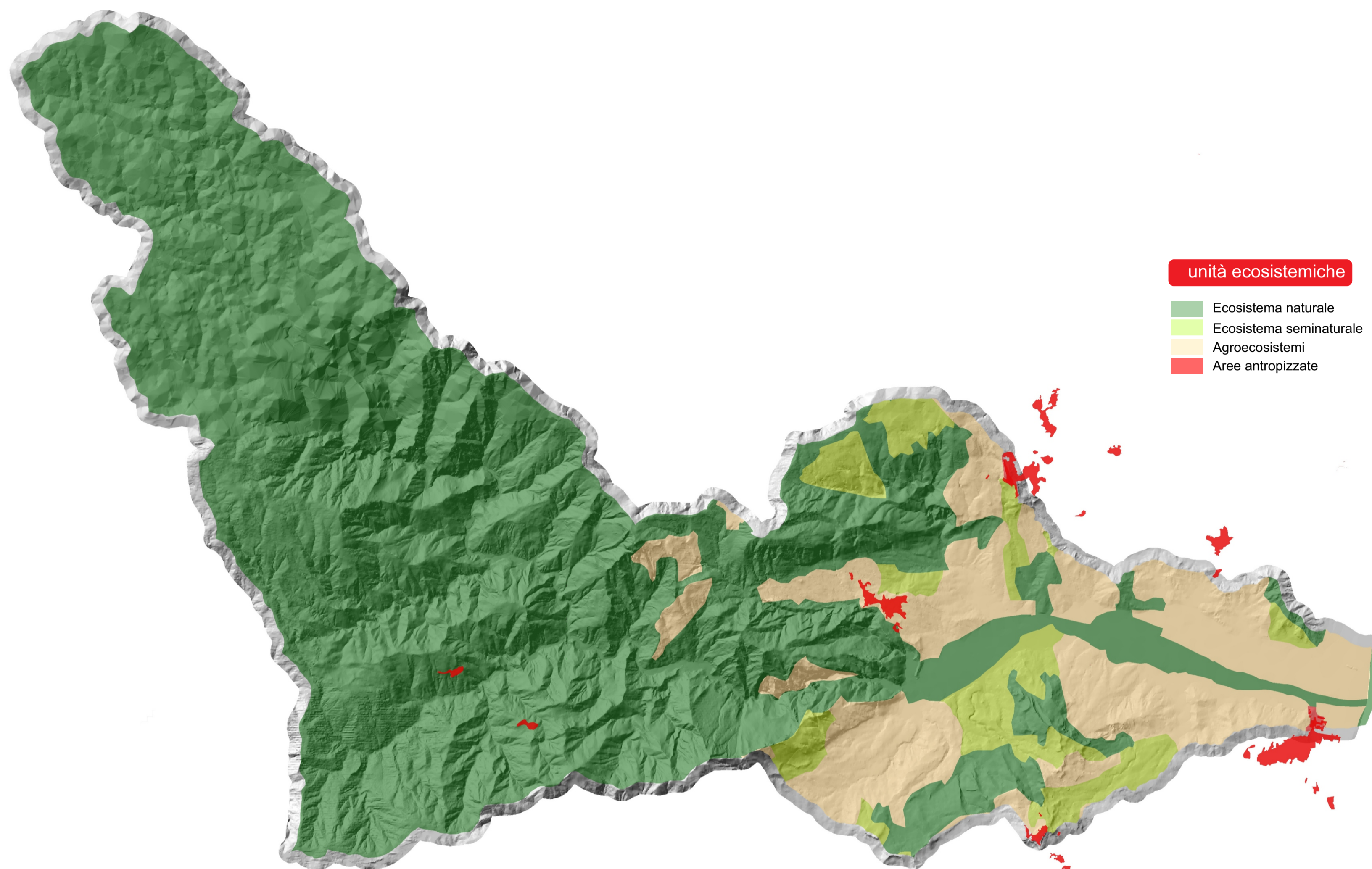


Unità ecosistemiche sistemi



- Terreni con inclinazione maggiore 15 gradi
- Litotipi non rigidi
- Potenzialmente liquefacibili per caratteristiche litologiche
- Aree di attenzione PAI
- Zone di attenzione PAI

- Areali a rischio frana PAI**
- R 4
 - R 3
 - R 2
 - R 1
- Aree in frana PAI**
- Scorrimento
 - Zona Franosa Profonda
 - Complessa

